

Ultra-Premium Exterior Paints

EVERSHIELD®

EXTERIOR

Outperforms, Outlasts, Outshines



THE #1 CHOICE OF
PAINTING PROFESSIONALS®

EVERSHIELD®

is a complete line of ultra-premium, ultra-low VOC, 100% acrylic paints, ideal for use on high-end projects where superior performance and durability are required.

Why EVERSIELD® outperforms the competition

- :: Formulated using advanced technology and premium ingredients that provide unparalleled performance, durability, coverage and adhesion
- :: Ultimate protection against moisture penetration and UV color fade
- :: Exceptional dirt pick-up resistance
- :: Outstanding gloss retention
- :: Superior non-blocking properties



Masonry



Wood



Metal



Stucco

	FLAT	VELVET	EGGSHELL	LOW SHEEN	SEMI-GLOSS	GLOSS
Doors & Windows				•	•	•
Shutters				•	•	•
Stucco	•	•	•			
Masonry & Brick	•	•	•			
Wood Siding	•	•	•			
Aluminum	•	•	•			
Vinyl Siding	•	•	•			
Soffit, Fascia & Eaves	•	•	•	•	•	•
Garage Doors & Gutters	•	•	•	•	•	•
Wrought Iron Gates				•	•	•
Doors & Fences				•	•	•

These are commonly used gloss levels for surfaces listed above. Gloss may be affected by texture, porosity of the surface and atmospheric conditions. Please contact a Dunn-Edwards representative or your local store for specific product availability.



PRODUCTS BEARING THIS LOGO ARE EG-FREE™ AND TAC/HAP-FREE

Ethylene Glycol (EG), a solvent often used in water-based paints, is listed as a Toxic Air Contaminant (TAC) and Hazardous Air Pollutant (HAP). In 1983, we were the first in the industry to voluntarily replace EG with Propylene Glycol, a non-toxic alternative “generally regarded as safe” by the FDA. Also, every Dunn-Edwards product with the EG-Free logo is formulated without any other TAC or HAP, too.



VOC AND RAVOC RATINGS ON EVERY LABEL

Dunn-Edwards is the first paint company to label its products with RAVOC ratings — Reactivity-Adjusted VOC Content — a better way to measure potential air quality impacts of coatings. To learn more about RAVOC ratings visit dunnedwards.com/RAVOC.



LEED® GOLD-CERTIFIED PAINT MANUFACTURING FACILITY

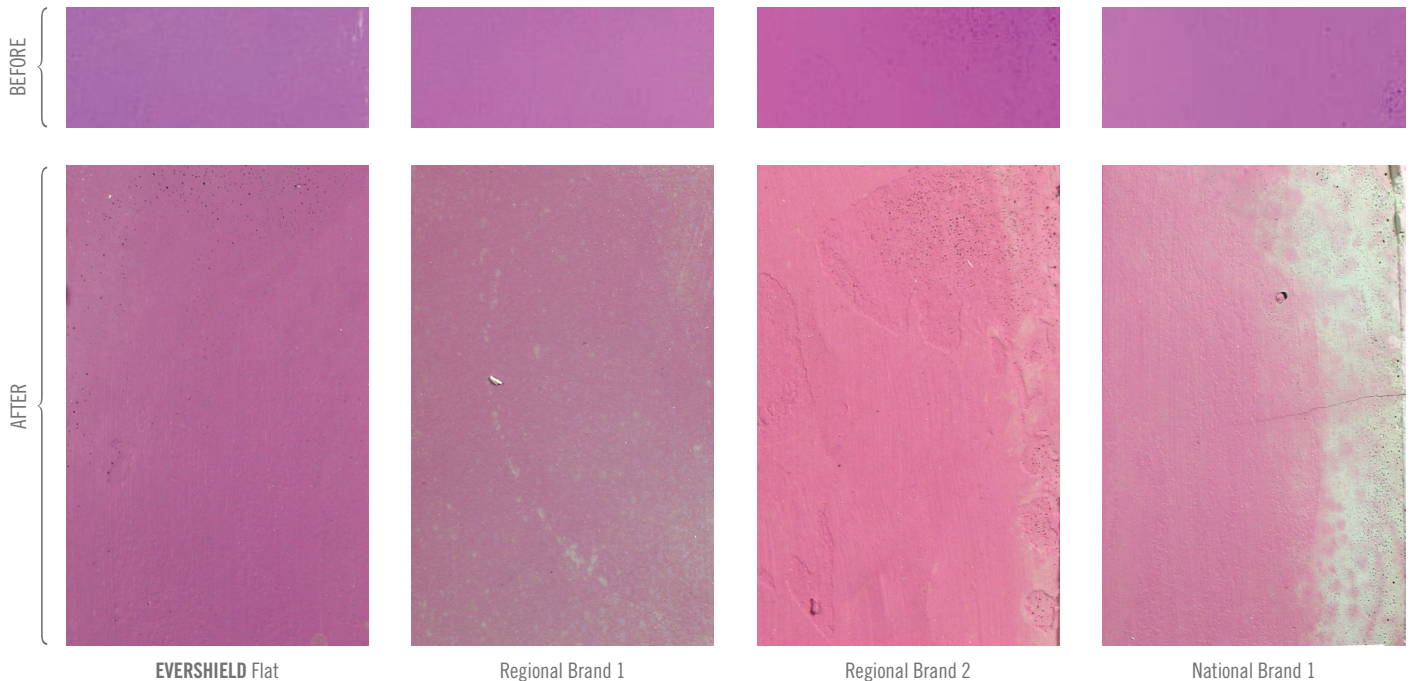
In 2011, Dunn-Edwards opened the world’s first and only LEED® Gold-certified paint manufacturing facility in Phoenix, AZ. Encompassing manufacturing, product development, quality control and more, the 336,000-sq. ft. facility is designed to be the greenest in the industry. “LEED” and related logo is a trademark owned by the U.S. Green Building Council and is used with permission.



See the **EVERSHIELD®** difference for yourself

Alkali Burnout Resistance Test

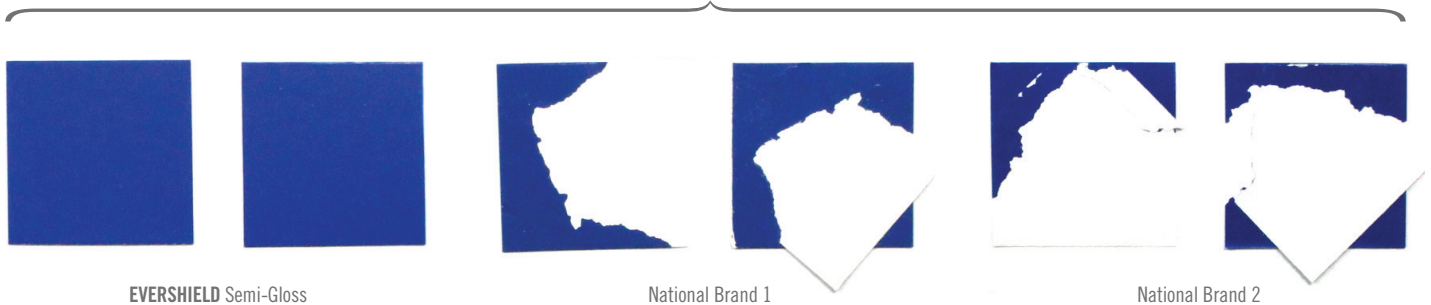
Fresh masonry is likely to contain lime, which is very alkaline (pH greater than 7). If the masonry is not allowed to cure properly, the alkalinity of the surface can attack the integrity of the paint film causing color loss and overall deterioration of the film.



Block Resistance

When two painted surfaces come into contact, such as a door and door jamb, they can stick together, or block. When that happens, the paint can peel from the surface. **EVERSHIELD** clearly beats the National Brands, as their paints are sticking together and peeling from the surface.

ONE DAY – ELEVATED TEMPERATURE

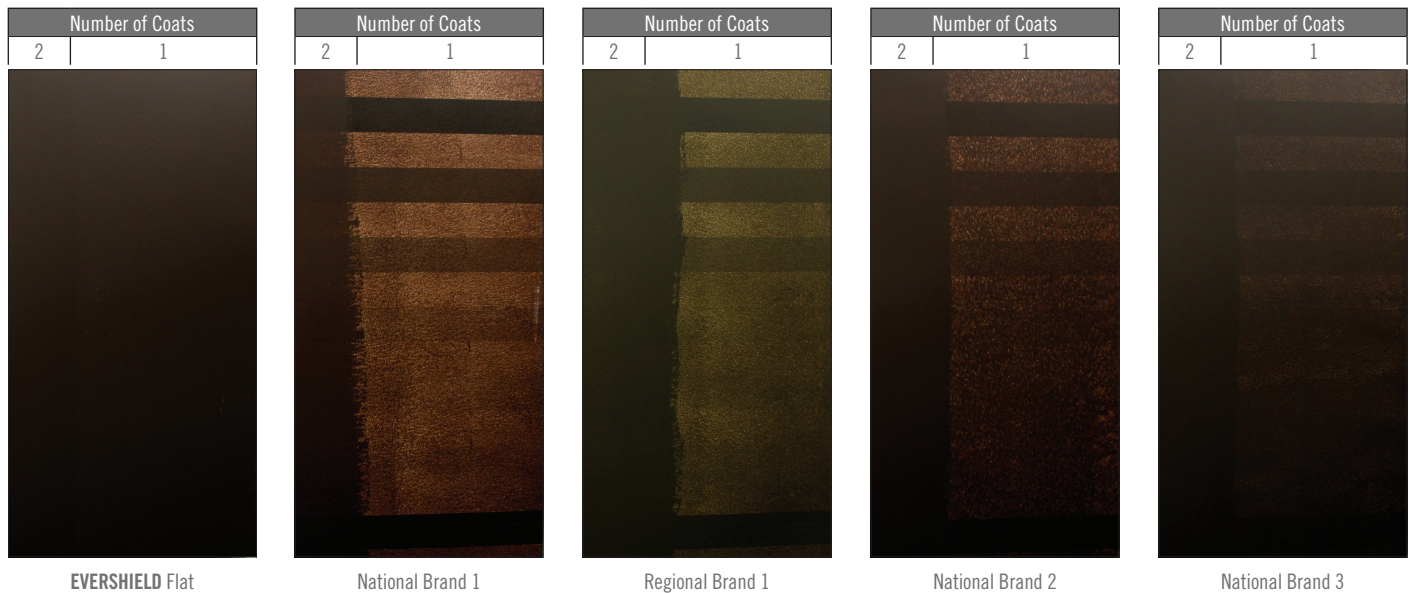


Alkali Burnout Resistance Test Method: A mixture of cement, lime, and water is made and poured into a pan and allowed to cure for at least 24 hours. It is then removed by turning it upside-down and gently tapping on the pan onto a towel. The concrete block is divided into equal parts (no more than 4 samples per concrete block). One and two coats of each paint sample are applied by brush at equal spread rates and allowed to cure overnight at ambient temperature. The following day, the block is partially submerged inside a water exposure tray and exposed to UV lamps for a minimum of 24 hours or until no more changes to the film are seen. If the sample has poor alkali resistance, it will turn Bright Yellow.

Block Resistance Test Method: Paints are applied to white charts and allowed to dry for 24 hours. The charts are then folded over each other. A weight is then placed on them to force the painted surfaces together. After 24 hours, the face-to-face charts are pulled apart to see if the dried paint stuck together.

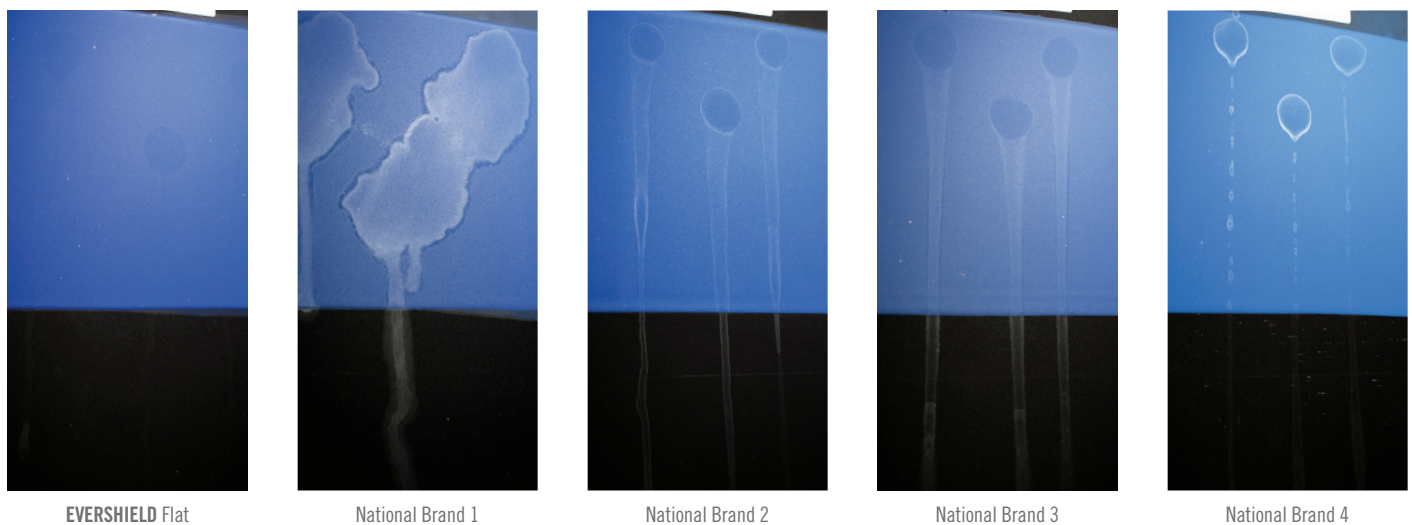
Applied Hide

EVERSHIELD® outperforms the competition in applied hide. Good applied hide ensures that the best hide is achieved when the maximum amount of paint is transferred to the substrate from the application tool.



Surfactant Leaching Resistance

Surfactant leaching is the migration of water-soluble ingredients of the coating that is caused by exposure to high humidity or moisture. These areas are evident by a change in appearance of the film showing a glossy or soapy/sticky residue on the surface, which can sometimes be brownish in color.



Applied Hide Test Method: A 4 x 8' drywall board is primed with a white acrylic primer. After allowing the primer to dry for 24 hours, varied shades of painted black to gray stripes are applied to the primed drywall (evenly spaced). After 24 hours, the first coat is applied to the test boards by roller. After 1 hour dry time, the second coat is applied and the results are evaluated.

Surfactant Leaching Test Method: A 3 mil drawdown is cast onto a vinyl chart and left to dry for 4 hours. Five drops of distilled water are placed on two spots and left to sit for 30 minutes. After 30 minutes, the panel is tilted to 90° and left to dry on a drying rack overnight. The panel is rated on the degree of any appearance change of the film from 1 (severe) to 5 (no change). The test is also repeated at different cure times to see if it improves with dry time.

All test examples are high resolution photographs of the actual test results. The tests were conducted by Dunn-Edwards Laboratories and can be viewed at the Corporate Office by appointment.

THE #1 CHOICE OF PAINTING PROFESSIONALS®

As a paint contractor, your business depends on your reputation. That's why you choose quality paint to do the best possible job. Dunn-Edwards understands this. That's why we focus on providing the best performing products.

Ask any professional painter and they will tell you, Dunn-Edwards is their number one choice of paint. In an independent survey, licensed painting contractors in Los Angeles, San Diego and Phoenix were asked what paint they would use on their own homes.

The overwhelming choice: Dunn-Edwards.*
The reason cited? Superior quality!

"For 12 years I've been a loyal Dunn-Edwards customer. I've found their paint products perform better than other brands, and their customer service is unmatched. Whenever I get questions on color selection, I can refer clients to the Professional Color Advisor at my local store and I know they will take care of them. I'm in good hands at Dunn-Edwards because their products and people outperform!"

Luis Ramos
Liberty Painting & Restoration
Brea, CA

Our paints are formulated using only the highest quality ingredients for optimal performance. In addition, our representatives provide an unmatched range of services from color selection to job site walks.

We recognize that our relationship with paint contractors is based on more than what's in a can of paint. We stand ready to provide the best product and service to support your business.

*Based on a February 2015 survey of licensed painting contractors in the Los Angeles, San Diego and Phoenix areas, conducted by Options Market Research.





A GREEN LEGACY, A GREENER FUTURE.

Dunn-Edwards has a green legacy that makes us proud and inspires us to do more. We are firmly dedicated to the principle of eco-efficiency, which we define as the ability to satisfy human needs in ways that minimize adverse impacts on energy and material resources, environmental quality, and human health and safety. **EVERSHIELD®** is yet another example of this commitment.



PHOTOGRAPHS: Paint colors depicted in the photographs in this color card appear differently than on actual surfaces. Photographic processes and lighting will alter color.

COVER PHOTO: Wall: Bone • DEC765 Trim: Weathered Brown • DEC756

BACK PHOTO: Wall: Warm White • DEW380

Follow Us



DUNN-EDWARDS CORPORATION

4885 East 52ND Place, Los Angeles, CA 90058

(888) DE PAINT® (337-2468) | dunnedwards.com

Dunn-Edwards®, The #1 Choice of Painting Professionals®, (888) DE PAINT® and EVERSHIELD® are registered trademarks of the Dunn-Edwards Corporation. ©2021 Dunn-Edwards Corporation. All rights reserved. ESL1017 • 4M 03/21



**THE #1 CHOICE OF
PAINTING PROFESSIONALS®**